

GOVERNMENT OF THE DISTRICT OF COLUMBIA

RESIDENTS

EXECUTIVE BRANCH

MAYOR

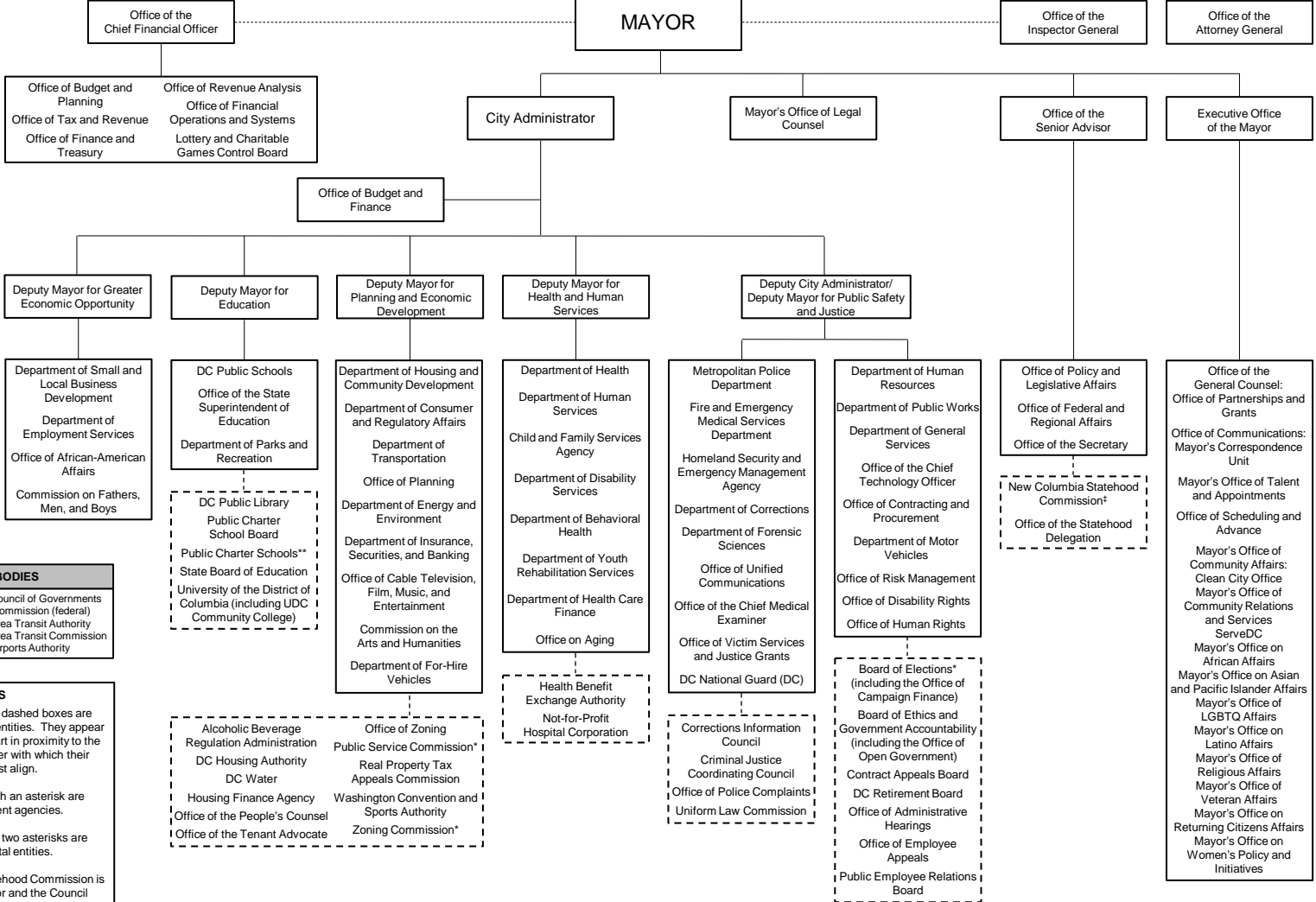


JUDICIAL BRANCH

LEGISLATIVE BRANCH

- Council of the District of Columbia
- DC Auditor
- Advisory Neighborhood Commissions

- DC Court of Appeals
- DC Superior Court
- Joint Committee on Judicial Administration
- Commission on Judicial Disabilities and Tenure
- Judicial Nomination Commission
- Sentencing and Criminal Code Revision Commission



- REGIONAL BODIES**
- Metropolitan Washington Council of Governments
 - National Capital Planning Commission (federal)
 - Washington Metropolitan Area Transit Authority
 - Washington Metropolitan Area Transit Commission
 - Washington Metropolitan Airports Authority

NOTES

Entities enclosed within dashed boxes are independent agencies or entities. They appear on this organizational chart in proximity to the Executive Branch cluster with which their functions most align.

* Agencies marked with an asterisk are Charter independent agencies.

** Entities marked with two asterisks are non-governmental entities.

† The New Columbia Statehood Commission is co-chaired by the Mayor and the Council Chairman.