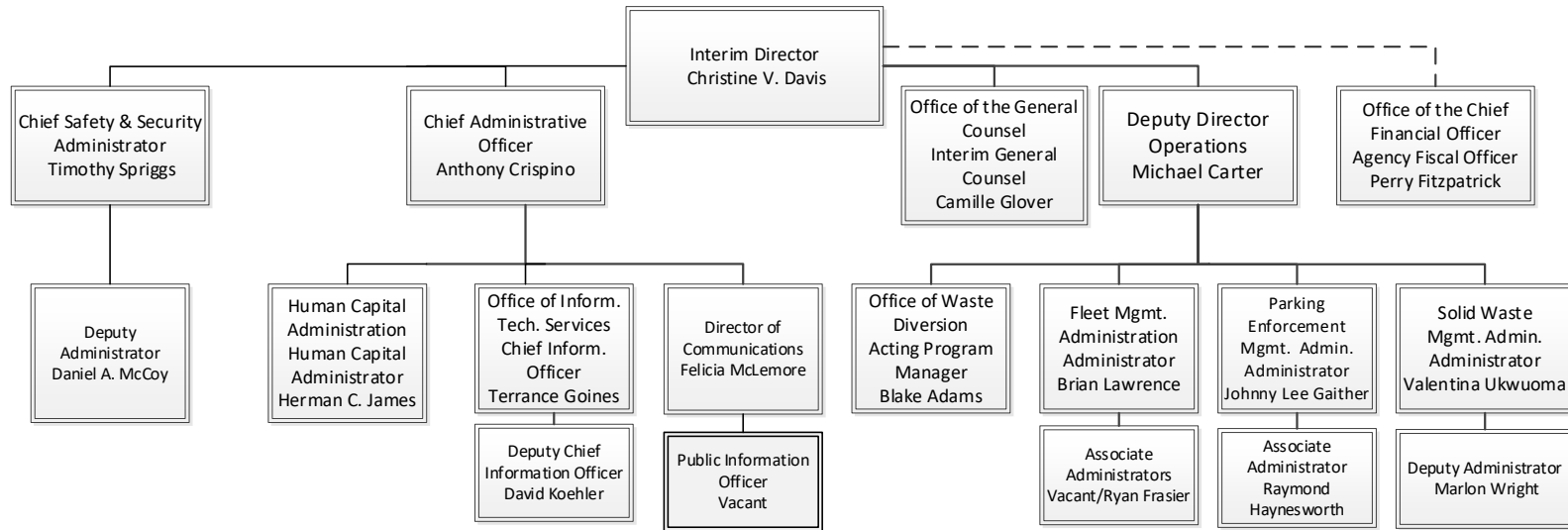
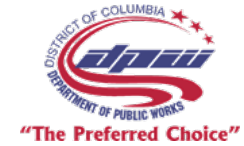




# Department of Public Works Agency



**Services include:**

- Contracts and Procurement Program Liaison
- Facilities Management
- Risk Management
- Emergency Worker's Comp
- Management Purchase Cards
- Support Services
- Security & Safety

**Services include:**

- Personnel Services
- Drug and Alcohol Education and Testing
- Professional Development and Training
- Workforce Development

**Services include:**

- Information Systems (hardware and software)
- Networks
- Telecommunications
- Mobile Technologies
- Imaging Technologies

**Services include:**

- Internal and External Communications strategy
- Media Relations
- Social media
- Public Information
- Murals DC
- Constituent Services

**Services include:**

- Development/Implementation of Zero Waste Plan
- Waste Diversion
- Sustainability
- Waste Management Policy

**Services include:**

- Fuel Services
- Scheduled Fleet Maintenance
- Unscheduled Vehicle and Equipment Repairs and Acquisitions

**Services include:**

- Parking Violation Enforcement
- Towing
- Vehicle Immobilization
- Abandoned Vehicles

**Services include:**

- Trash/Recycling Collection
- Leaf and Holiday Tree Collection
- Graffiti Removal
- Street and Alley Cleaning
- Litter Can Collection
- Snow Removal,
- Solid Waste Education and Enforcement,
- Waste Transfer Stations
- Grounds maintenance
- Special Events