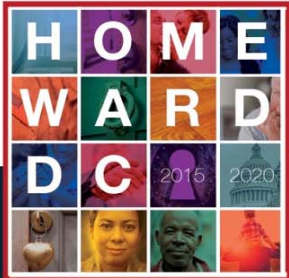


★ ★ ★ GOVERNMENT OF THE DISTRICT OF COLUMBIA  
MURIEL BOWSER, MAYOR

**A FRESH START TO ENDING FAMILY HOMELESSNESS**

## **Short-Term Family Housing Advisory Team Meeting September 28, 2017**

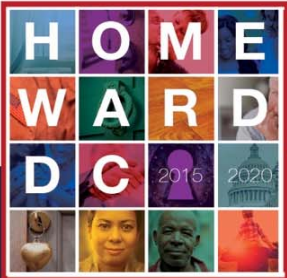
**Ward 3 – 3320 Idaho Avenue, NW**



## A FRESH START TO ENDING FAMILY HOMELESSNESS

### Agenda

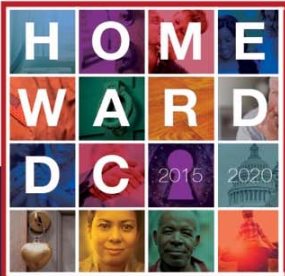
- **Welcome and Introductions**
- **Temporary Parking follow up**
  - **Temporary Parking Plan Update**
- **Project Design Update**
  - **Garage Design Update**
  - **Temporary impact to garden**
- **Next Community Meeting**



## A FRESH START TO ENDING FAMILY HOMELESSNESS

### MPD Temporary Parking Plan Overview

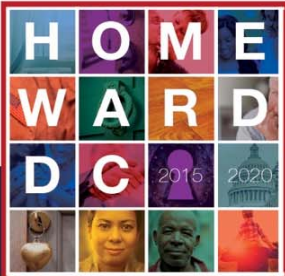
- Eliminated use of metered parking
- Use of Macomb Street
- Maintain use of only unrestricted spaces and no RPP Spaces
- Coordinated with DDOT and DPW for implementation and enforcement



# A FRESH START TO ENDING FAMILY HOMELESSNESS

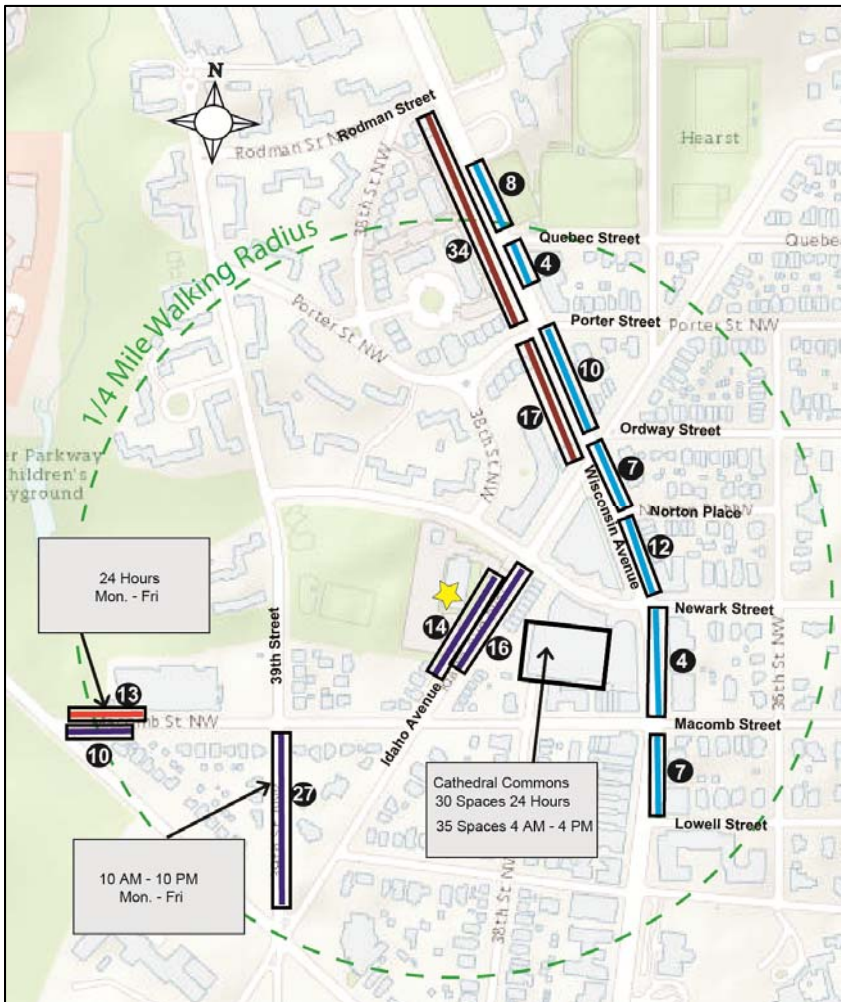
## MPD Temporary Parking Plan Overview

Location	July 2017	September 2017	Notes
<b>Cathedral Commons</b>	30 spaces (24-hr) 35 spaces (M- F; 4AM – 4PM)	30 spaces (24-hr) 35 spaces (M- F; 4AM – 4PM)	
<b>Wisconsin Avenue East Side</b>	26 – 57 (unrestricted/metered) No parking from 4PM – 6:30PM Some commercial parking available weekday evenings	52 unrestricted	<ul style="list-style-type: none"> <li>No metered spaces used for MPD</li> <li>All MPD spaces 24 hr</li> <li>No parking during rush hour</li> </ul>
<b>Wisconsin Avenue West Side</b>	10 – 86 (unrestricted/metered) No parking from 7AM – 10AM Some commercial parking available mid-day and weekends	51 unrestricted	<ul style="list-style-type: none"> <li>No metered spaces used for MPD</li> <li>All MPD spaces 24 hr</li> <li>No parking during rush hour</li> </ul>
<b>Idaho Avenue</b>	20 unrestricted (plus 7 unrestricted for construction staging)	30 unrestricted	<ul style="list-style-type: none"> <li>Previous construction staging spaces included in TPP</li> <li>Updated inventory</li> </ul>
<b>Macomb Street</b>	N/A	23 unrestricted	<ul style="list-style-type: none"> <li>North side (currently no parking on weekdays)</li> <li>No MPD parking weekends</li> </ul>
<b>39<sup>th</sup> Street</b>	23 unrestricted	27 unrestricted	<ul style="list-style-type: none"> <li>39<sup>th</sup> Street (south of Macomb only)</li> <li>MPD reserved 10AM – 10PM vs. 24 hrs</li> </ul>
<b>TOTAL</b>	<b>159 - 246</b>	<b>161 - 248</b>	



# A FRESH START TO ENDING FAMILY HOMELESSNESS

## Temporary Parking Plan



**MPD**

**Reserved Parking Space Supply**

Idaho Avenue	30
39th Street	27
Wisconsin Avenue East	52
Cathedral Commons	30
Cathedral Commons Limited	35*
Wisconsin Avenue West	51
Macomb Street	23

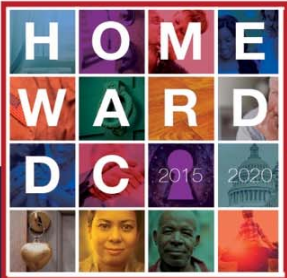
\*Spaces available 4:00 AM - 4:00 PM Monday - Friday

**LEGEND**

**Current Parking Restrictions**

	No Parking Restrictions		Site
	No Parking Except Sun. 9:00 AM - 1:00 PM		Temporary Parking Areas (MPD) Available
	No Parking 7:00-10:00 AM M-F		Parking Supply per Segment
	No Parking 4:00-6:30 PM M-F		

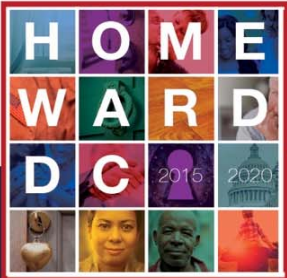
NOTE: Temporary Parking Areas Have 24-Hour Restriction Unless Otherwise Noted



# A FRESH START TO ENDING FAMILY HOMELESSNESS

## MPD Parking Spaces by Time of Day

	4A - 7A	7A - 10A	10A - 4P	4P - 6:30P	6:30P - 10P	10P - 12A	12A - 4A	Weekends
<b>Idaho Avenue, NW</b>	30	30	30	30	30	30	30	30
<b>39<sup>th</sup> Street, NW</b>	0	0	27	27	27	0	0	0
<b>Macomb Street, NW</b>	23	23	23	23	23	23	23	0
<b>Cathedral Commons</b>	65	65	65	30	30	30	30	30
<b>Wisconsin East</b> (MPD parking at all times except rush hour restrictions from 4PM to 6:30 PM)	52	52	52	0	52	52	52	52
<b>Wisconsin West</b> (MPD parking at all times except rush hour restrictions from 7AM - 10AM)	51	0	51	51	51	51	51	51
<b>Total</b>	<b>221</b>	<b>170</b>	<b>248</b>	<b>161</b>	<b>213</b>	<b>186</b>	<b>186</b>	<b>163</b>



# A FRESH START TO ENDING FAMILY HOMELESSNESS

## Sample Signage



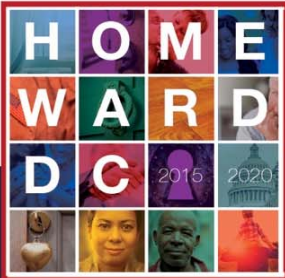
Wisconsin Avenue  
Idaho Avenue, NW



Macomb Street, NW



39<sup>th</sup> Street, NW



## A FRESH START TO ENDING FAMILY HOMELESSNESS

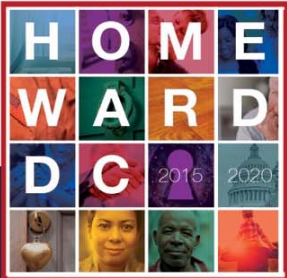
### Enforcement

- Placard must be displayed in Special Permit Areas
- No parking (including MPD) on Wisconsin Avenue during rush hour restrictions
- Regular Meter Enforcement on Wisconsin Avenue
- Unrestricted use of 39<sup>th</sup> Street at 10PM; however, some MPD vehicles may remain during end of shift



Sample Placard





# A FRESH START TO ENDING FAMILY HOMELESSNESS

## TPP – Pre-cast Construction Signage

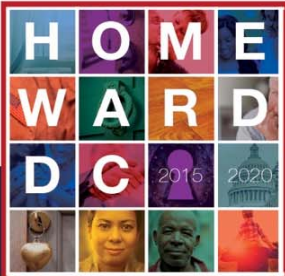


Legend	
	Site
	Construction Staging
	39th Street Parking Precast Construction Only
	MPD Reserved Parking Spaces
	Parking Supply per Segment
	Temporary Parking Areas (MPD) Available



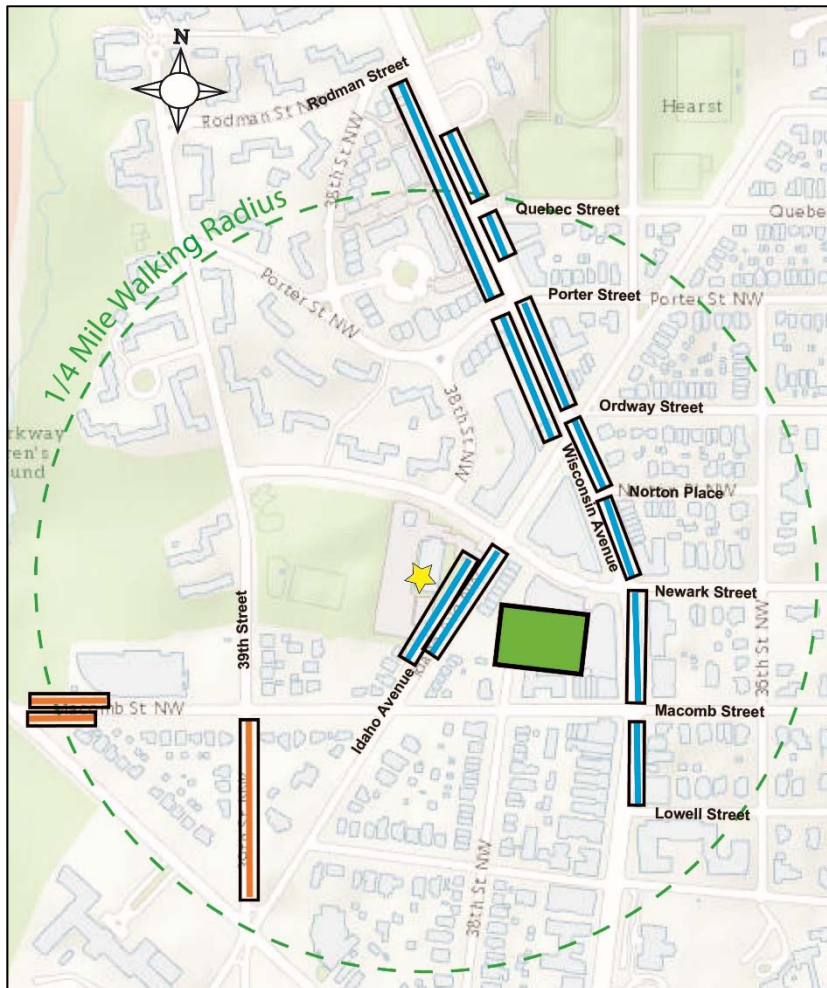
Idaho Avenue, NW  
39<sup>th</sup> Street, NW

- 9 MPD spaces on Idaho Avenue needed for Pre-Cast delivery
- Six week precast construction schedule
- 8 temporary short-term spaces to be reserved on 39th Street – north of Macomb Street
- 24 hours
- Temporary Signage during pre-cast installation (six weeks)



# A FRESH START TO ENDING FAMILY HOMELESSNESS

## TPP - Implementation



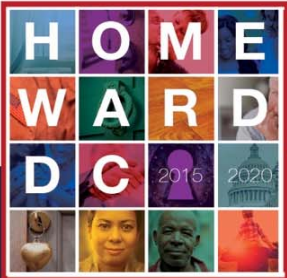
### Phasing Plan

Phase I  
Cathedral Commons full time and part time

Phase II  
Wisconsin Avenue and Idaho Avenue

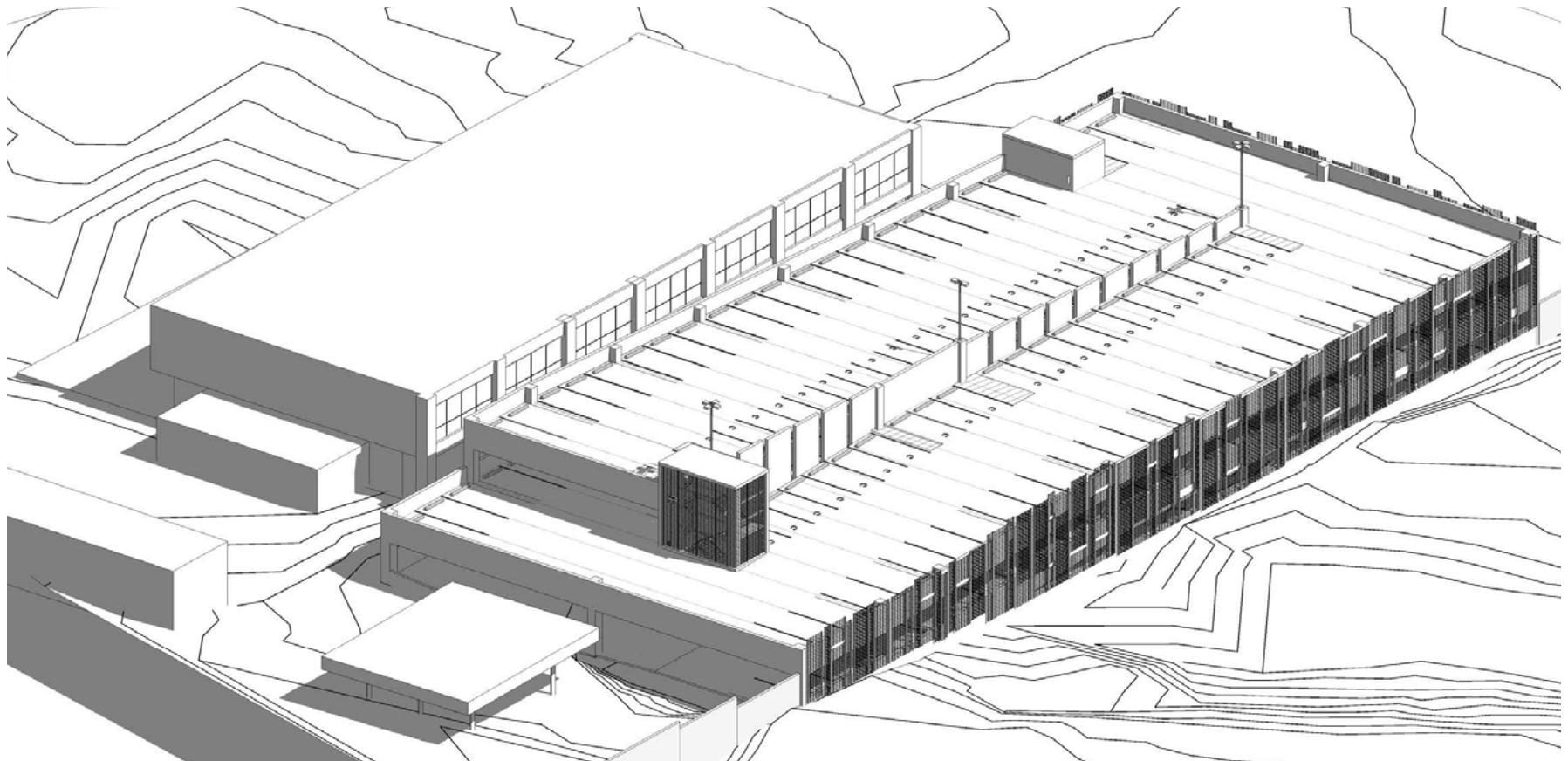
Phase III  
39<sup>th</sup> Street and Macomb Street

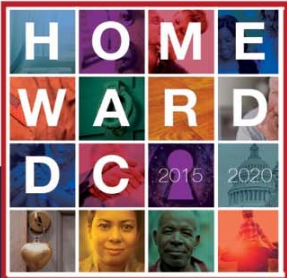




# A FRESH START TO ENDING FAMILY HOMELESSNESS

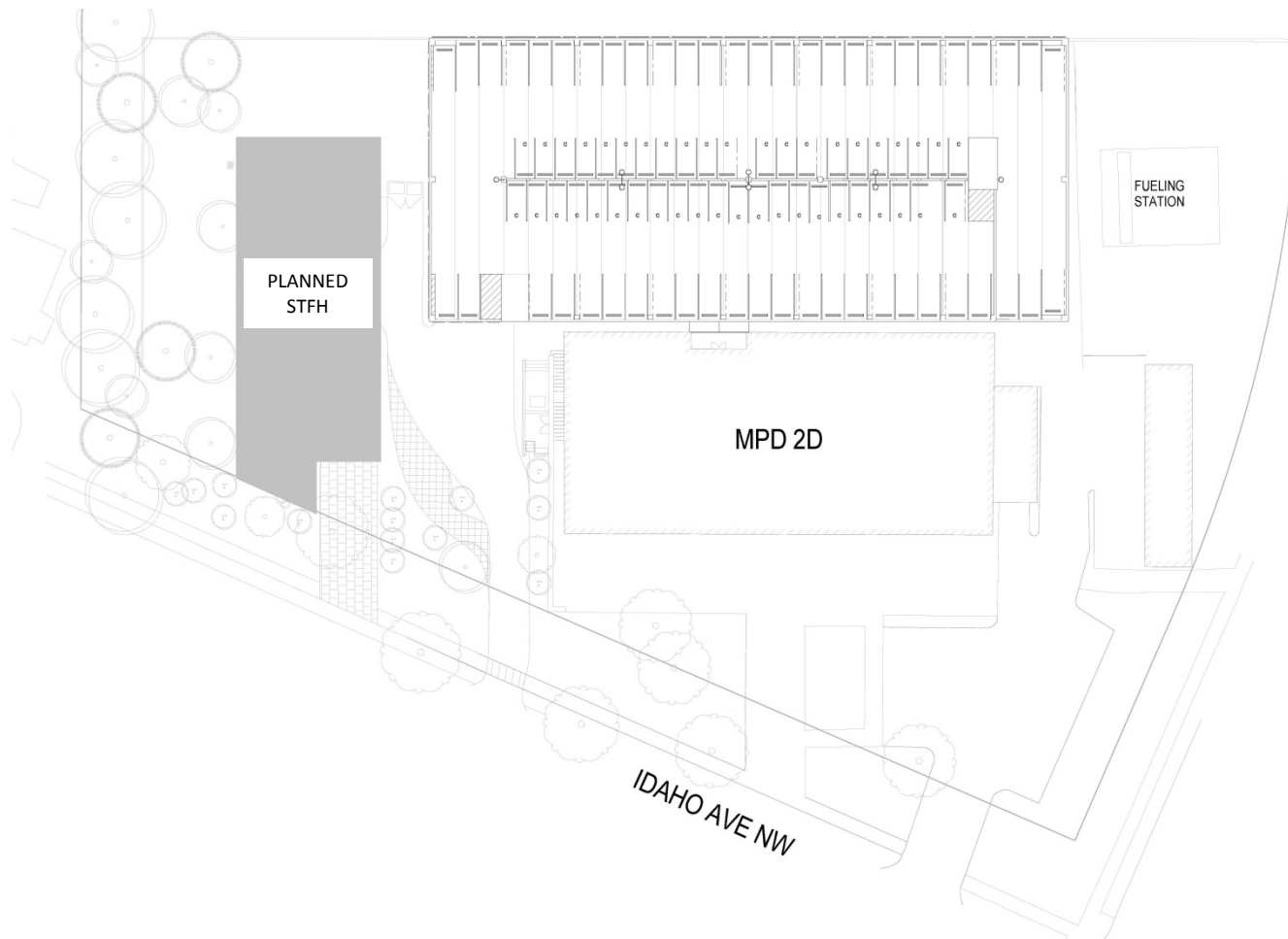
## Garage Design Update

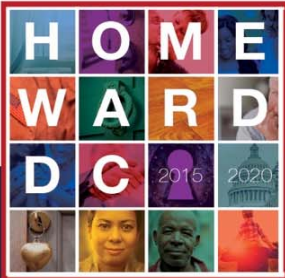




# A FRESH START TO ENDING FAMILY HOMELESSNESS

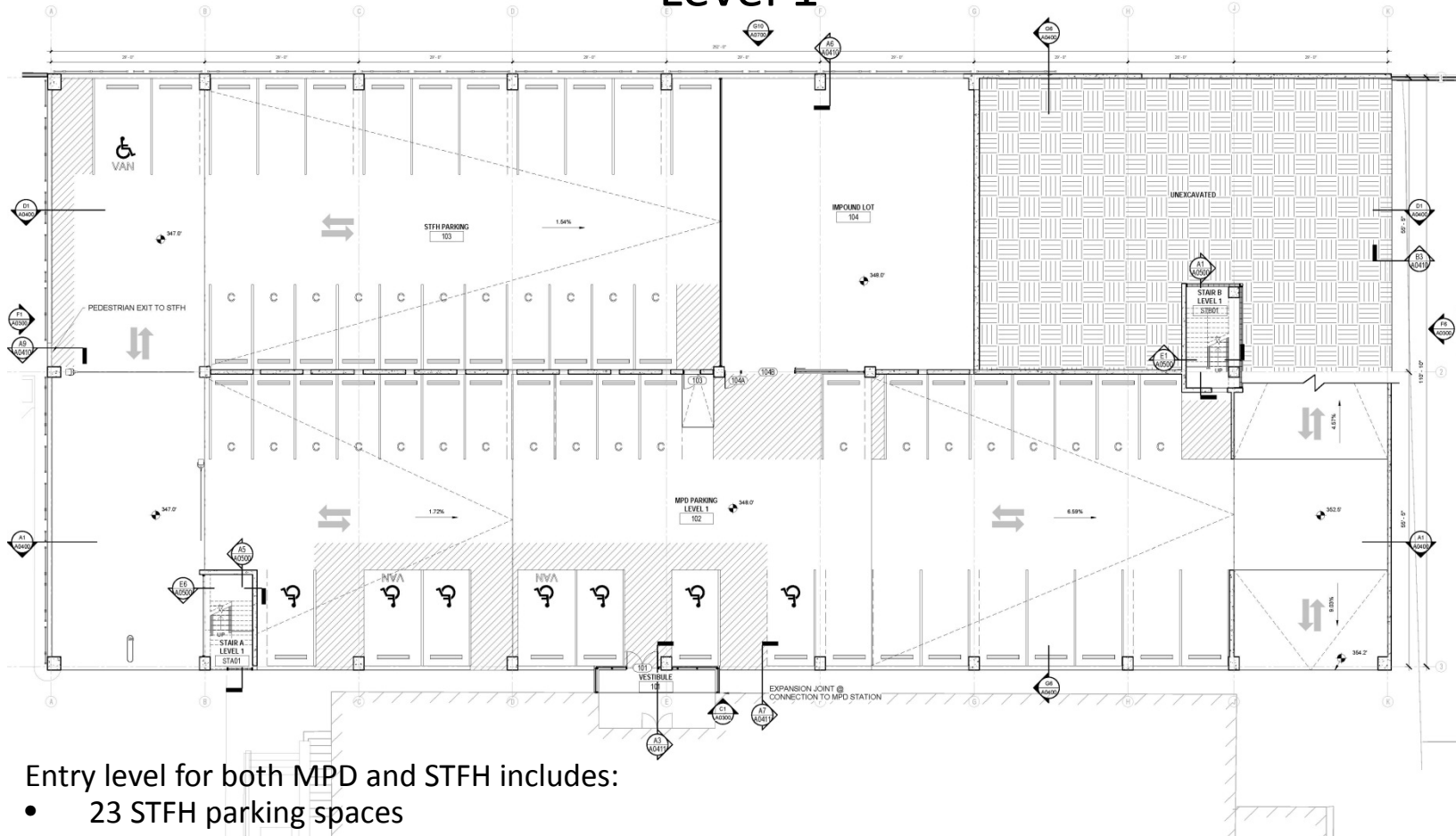
## Site Plan





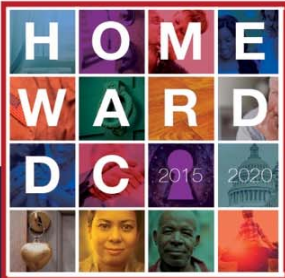
# A FRESH START TO ENDING FAMILY HOMELESSNESS

## Level 1



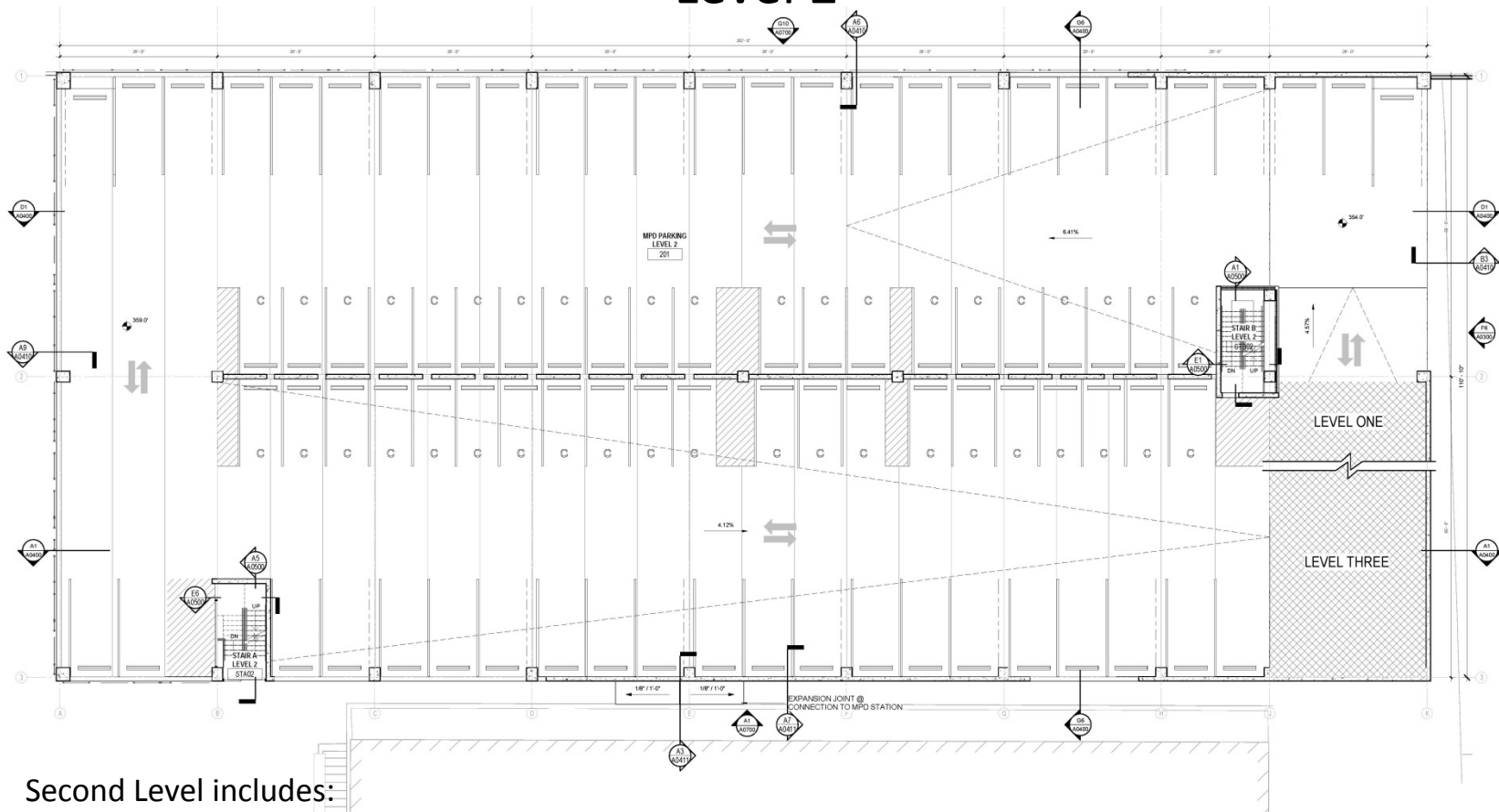
Entry level for both MPD and STFH includes:

- 23 STFH parking spaces
- 34MPD parking spaces
- 2600 Sf for MPD Impound lot

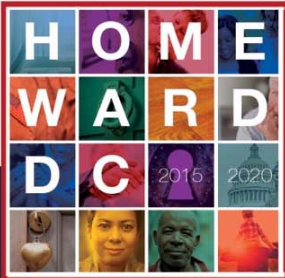


# A FRESH START TO ENDING FAMILY HOMELESSNESS

## Level 2

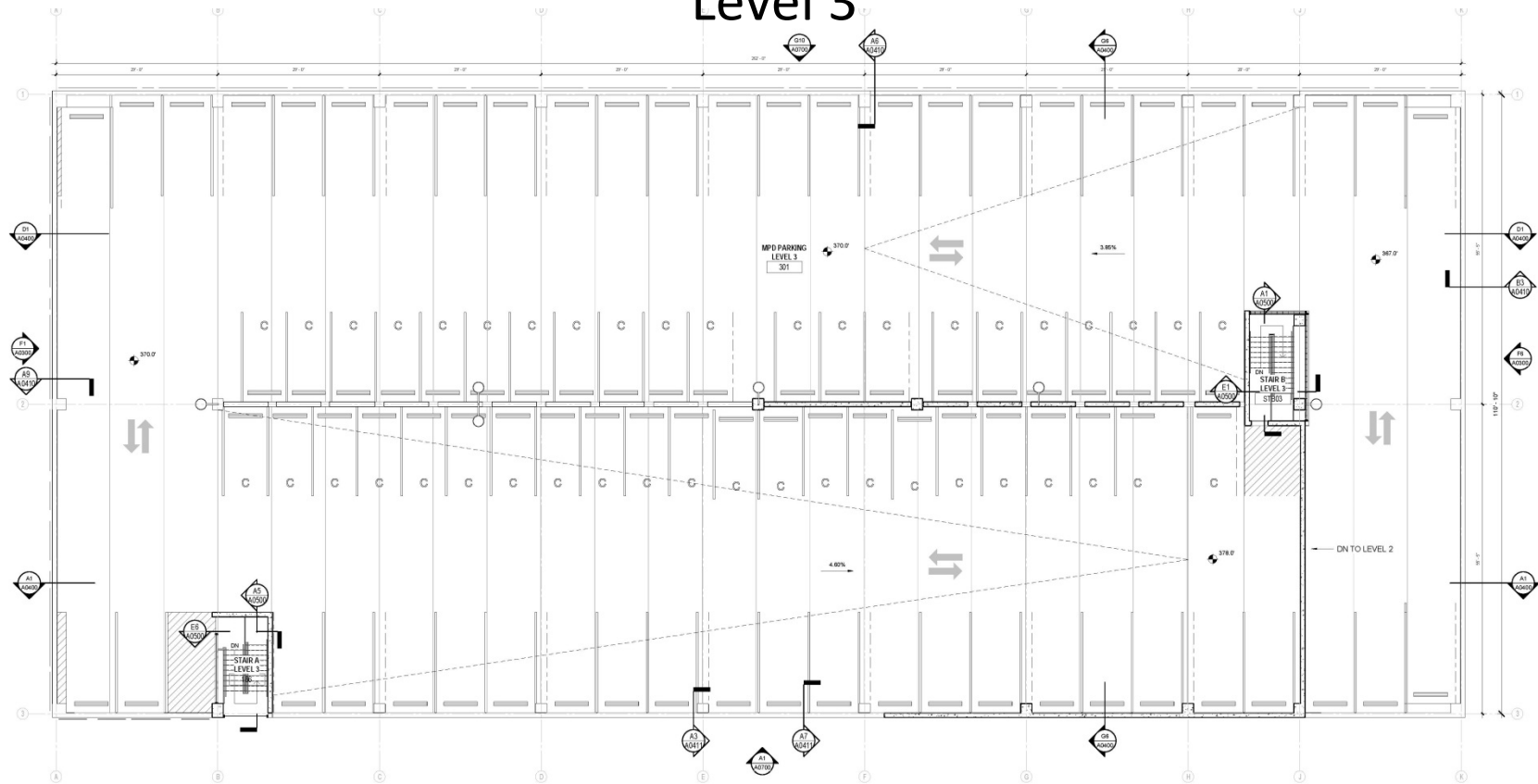


- Second Level includes:
- 89 MPD parking spaces



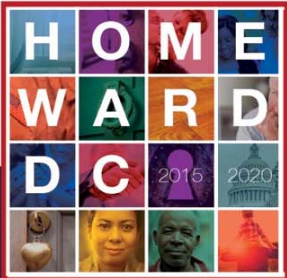
# A FRESH START TO ENDING FAMILY HOMELESSNESS

## Level 3



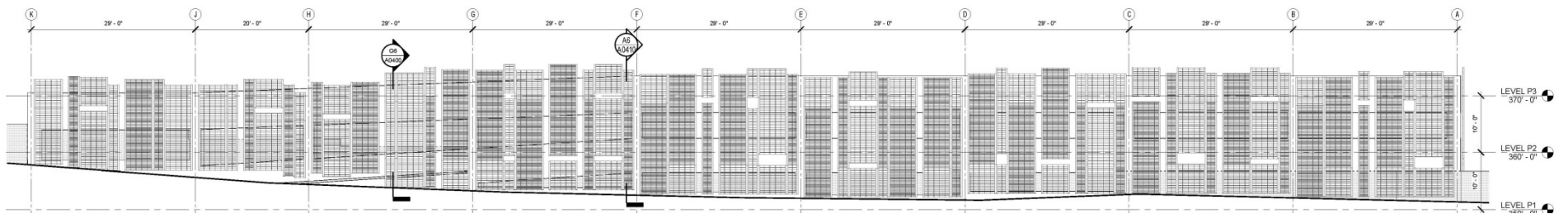
Third Level includes:

- 93MPD parking spaces

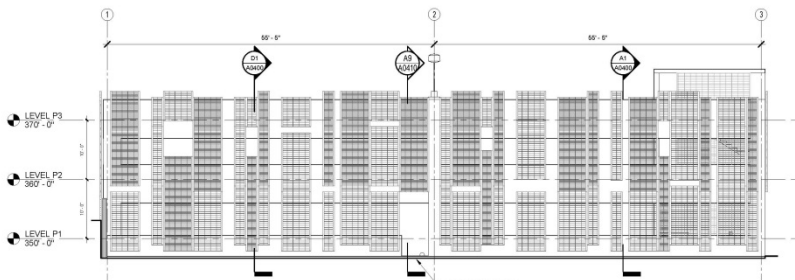


# A FRESH START TO ENDING FAMILY HOMELESSNESS

## Elevations



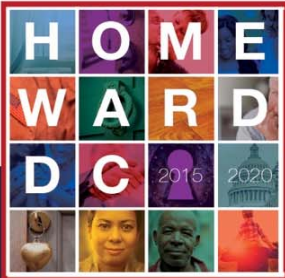
West Elevation



South Elevation

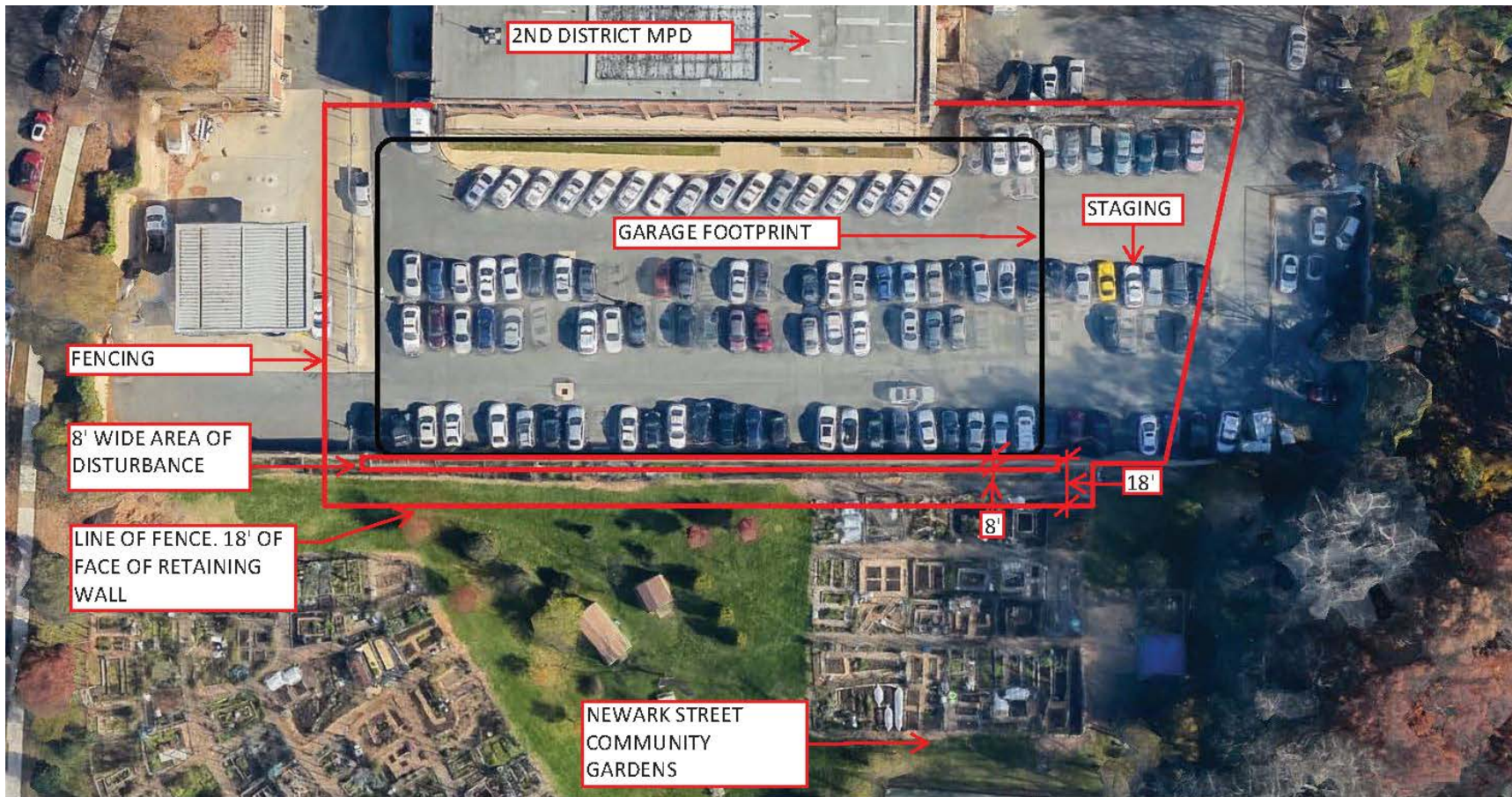


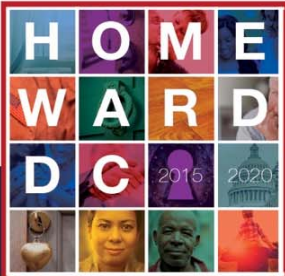




# A FRESH START TO ENDING FAMILY HOMELESSNESS

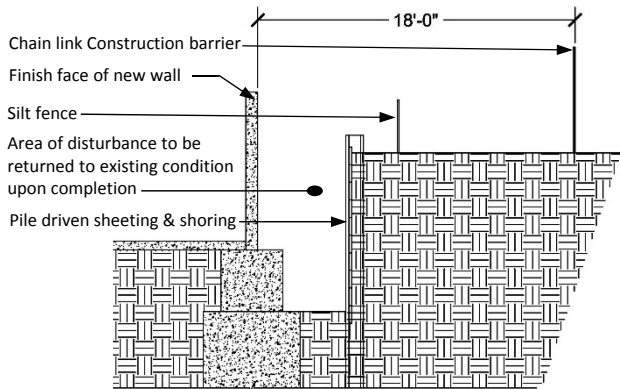
## Limits of Disturbance



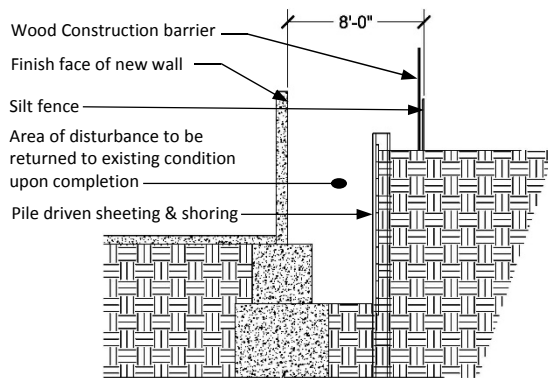


# A FRESH START TO ENDING FAMILY HOMELESSNESS

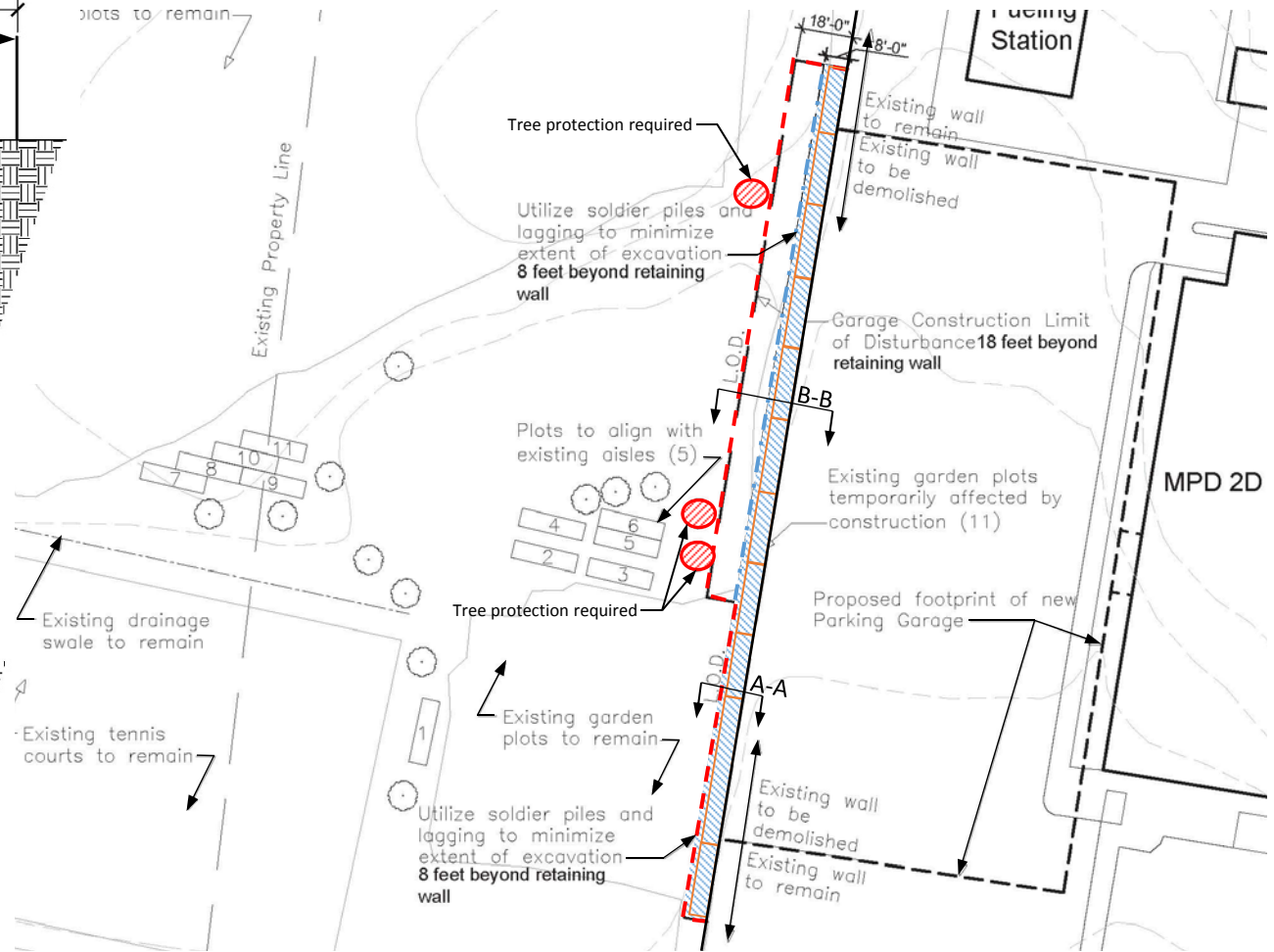
## Limits of Disturbance

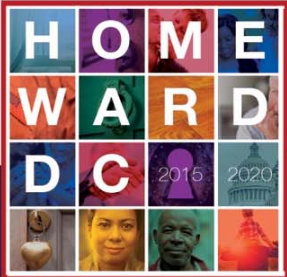


**Section B-B**



**Section A-A**

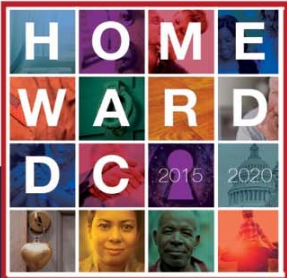




## A FRESH START TO ENDING FAMILY HOMELESSNESS

### Newark Community Garden Engagement Strategy

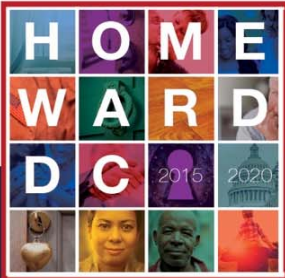
1. Coordinate with garden president to develop relocation plan, assess plant types and best practices
2. Confirm proposed plot relocation plan
3. Have the plots relocated prior to wall demolition
4. Engagement starting next week



# A FRESH START TO ENDING FAMILY HOMELESSNESS

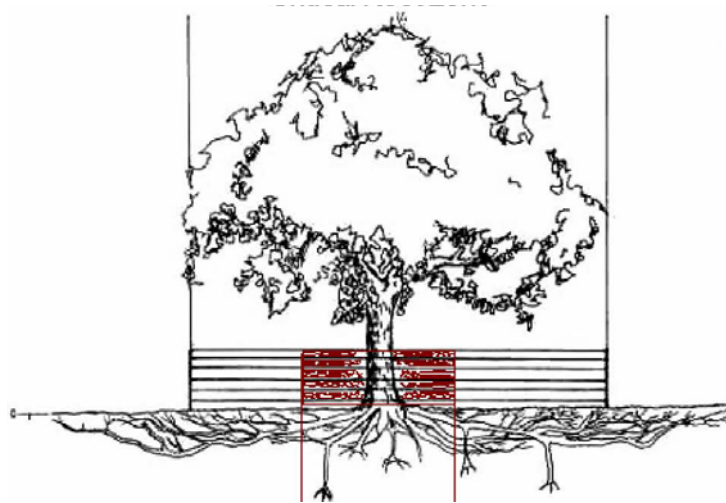
## Green Screen Examples





## A FRESH START TO ENDING FAMILY HOMELESSNESS

### Tree Protection

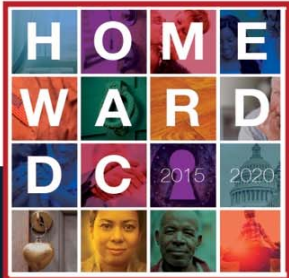


Tree Protection Fence



Construction LOD Fence

- Walked the site with Urban Forestry Administration (UFA) representative and confirmed non of the trees fall in the Limits of Disturbance.
- UFA recommended provide tree protection for tree closest to the Limits of Disturbance fence (3 trees) and ensure any disturbance be limited to 6' from the tree trunk.
- Protect the *Critical Root Zone* (CRZ) by erecting chain link fencing which protects the tree and root system by keeping out all detrimental construction activity
- Chain link Construction Fence installed at the LOD. Post will be driven into the soil and privacy screen or slats will be installed

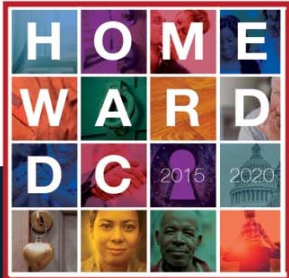


# A FRESH START TO ENDING FAMILY HOMELESSNESS

Communication During Construction

**Brian Van Hoven**

**[STFHprojects.DGS@dc.gov](mailto:STFHprojects.DGS@dc.gov)**



## A FRESH START TO ENDING FAMILY HOMELESSNESS

### Next Steps

#### Establish Next Meeting Dates:

- Newark Street Community Garden Meeting
- Community Meeting